

User Manual

For your safety, always read the user manual carefully before using.

Status Indicators

Status	Light	Display	Sound	Action
Start Up / Ready for Use	Green Light On 	1. Unlimited Number of Days 2. Sessions Remaining 	1 short beep after power ON	Follow "Using Truvaga" Instructions
In Use	Green Light On 	Intensity Level (min 1 – max 40) 	Short beep each time intensity level is increased/decreased	Follow "Using Truvaga" Instructions
Session Complete	None 	1. Unlimited Number of Days 2. Number of Sessions Remaining 3. Last Intensity Level Used 	2 short beeps	NONE: Truvaga turns off automatically

Electrical Classification

- UL 60601-1 Class III; EN 60601-1 Internally Powered Equipment
- Type BF Applied part
- Only the manufacturer should change the battery
- Protection from solid foreign objects ≥ 12.5 mm and ingress of water at 15°

Electromagnetic Compatibility Guidance

- All Engineering specifications have passed the required test levels. All specifications are available upon request.

Disposal

Regulations require that the disposal of electrical and electronic equipment is handled in a controlled manner. A product that may be contaminated after use or contain chemicals or elements that may present hazards to people, or the environment must be disposed of in accordance with the applicable government regulations. Contact Truvaga Customer Support if you have questions about the appropriate disposal of this product.

NOTE: Truvaga contains lithium batteries that the user cannot remove.

NOTE: Please dispose Truvaga like a cell phone or other electronic product. Check with your local municipality to do this according to your local electronic waste regulations.

Contact Information

Truvaga Customer Support:
e-mail: support@truvaga.com

electroCore, Inc.
200 Forge Way, Suite 205
Rockaway, NJ 07866
United States

Telephone: 1 (800) 643-2036



Manufacturer:
e-mail: support@truvaga.com

electroCore, Inc.
200 Forge Way, Suite 205
Rockaway, NJ 07866
United States

Product Complaint Reports and/or related issues may be submitted directly to electroCore, Inc.:

Telephone: +1 (973) 355-6708
E-mail: complaints@electrocore.com

Symbols and Nomenclature Description

	Expiration date		Follow operating instructions
	Lot number		Manufacturer
	Catalog number / Reference number		Protection from solid foreign objects ≥ 12.5 mm and ingress of water at 15°
	Electric shock hazard		Type BF applied part
	Serial number		Storage temperature
	Non-sterile	xxxxcyzzzz (package label)	Date of Manufacture on package label, where: "C" is the year of manufacture, eg. 252CS1001 indicates the year of manufacture is 2022
	WARNING Failure to follow instructions may result in serious injury or death to the patient or user		Magnetic resonance unsafe
	PRECAUTION Failure to follow instructions may result in damage to the equipment or degradation in the quality of treatment		Date of Manufacture
	Refer to User Manual		Do not use if package is damaged
	Information or additional information available		Keep away from sunlight
	Separate collection for waste of electrical and electronic equipment		

Warnings and Precautions



WARNINGS

Do not use Truvaga if:

- You have an active implantable medical device, such as a pacemaker, hearing aid implant, or any implanted electronic product.
- You are using another product at the same time (e.g., TENS Unit, muscle stimulator).
- You are driving, operating machinery, or during any activity that may put patient at risk of injury.
- You are in the presence of strong electromagnetic fields, such as MRI scanners.
- You are in an explosive atmosphere or in the presence of flammable gas mixtures.
- You have an open wound, rash, infection, swelling, cut, sore, drug patch, or surgical scar(s) on the neck at the application site.
- You have wet skin, are in the water, or just stepped out of the water (e.g., shower, bath, pool).

It is not recommended to use Truvaga:

- If you have had surgery to cut the vagus nerve at the neck as it may not be effective.
- If you are younger than 12.
- If you are pregnant or breastfeeding.
- More than 24 times a day.



PRECAUTIONS

- Truvaga should be used only as described in the User Manual.
- Only use a Truvaga supplied conductive gel.
- Do not apply Truvaga across or through the head, directly on the eyes, covering the mouth, on the chest, on the upper back, or over the heart.
- Do not use Truvaga if there are signs of damage or defects.
- Do not use if the light is flashing green and "Err" is displayed on the screen when the product is turned on.
- Do not submerge Truvaga in water; it is not water resistant.
- Store in a safe location out of reach of children.

Potential Adverse Reactions

Users with sensitive skin may experience application site discomfort, irritation and/or redness. If you experience light-headedness, dizziness, or chest pain, excessive skin irritation, local pain, face/head/neck area (including toothache), muscle twitching, tingling, contractions or other adverse reactions DISCONTINUE USE. These reactions typically resolve after the session is complete, however, if it persists after the session, consult your physician.

Handling Conditions

Operating/Storage/Transport Conditions

- Store at room temperature away from moisture
- Range: 32°F to 100°F (0°C to 38°C)
- Do not expose gel to direct sunlight

Service Life

- The service life of Truvaga is 1.5 years after the date of manufacture.
- The expiration date of the conductive gel is 5 years after the date of manufacture.

Ordering Instructions

Please visit Truvaga.com to purchase a new Truvaga, learn more about Truvaga, and to contact customer support.

Customer Service Limited Liability:

electroCore guarantees against any out-of-box failures and warrants that the Products shall meet the Product Standard. The warranty does not apply to any Product that: (i) has been subjected to abuse, misuse, neglect, negligence, accident, improper testing, improper installation, improper storage, improper handling, abnormal physical stress, abnormal environmental conditions, or use contrary to any instructions issued by electroCore; or (ii) has been reconstructed, repaired, or altered by persons other than electroCore or its authorized Representative. Customers shall not service, repair, modify, alter, replace, reverse engineer, or otherwise change any Products.

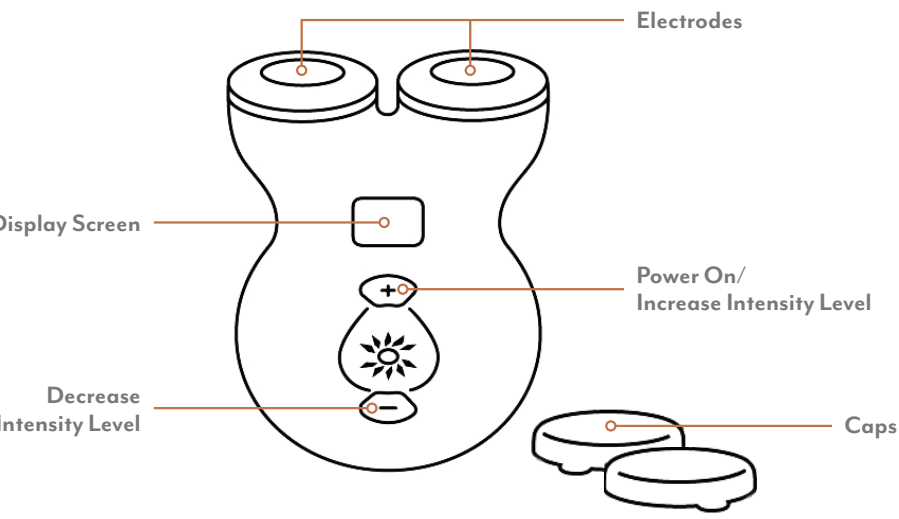
About Truvaga

Truvaga is a hand-held vagus nerve stimulator that brings balance to your day-to-day, by providing science-backed vagus nerve therapy for reliable stress relief, so that you can feel calmer, think clearer, and sleep better.

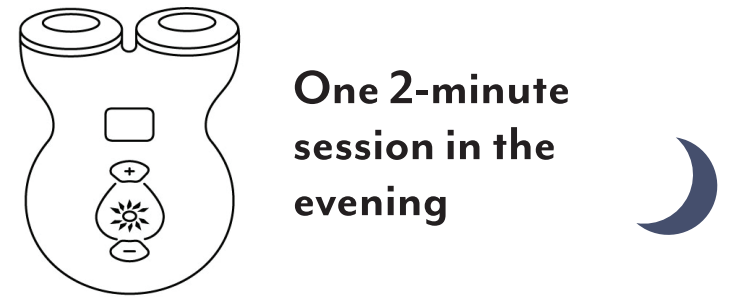
Truvaga works by using gentle electrical stimulation to the side of the neck, activating the vagus nerve and carrying information to the central nervous system. Each session lasts 2 minutes; during these 2 minutes, the user has complete control over the intensity level.

NOTE: Truvaga comes preloaded with 350 sessions.

Get to know your Truvaga



Using your Truvaga

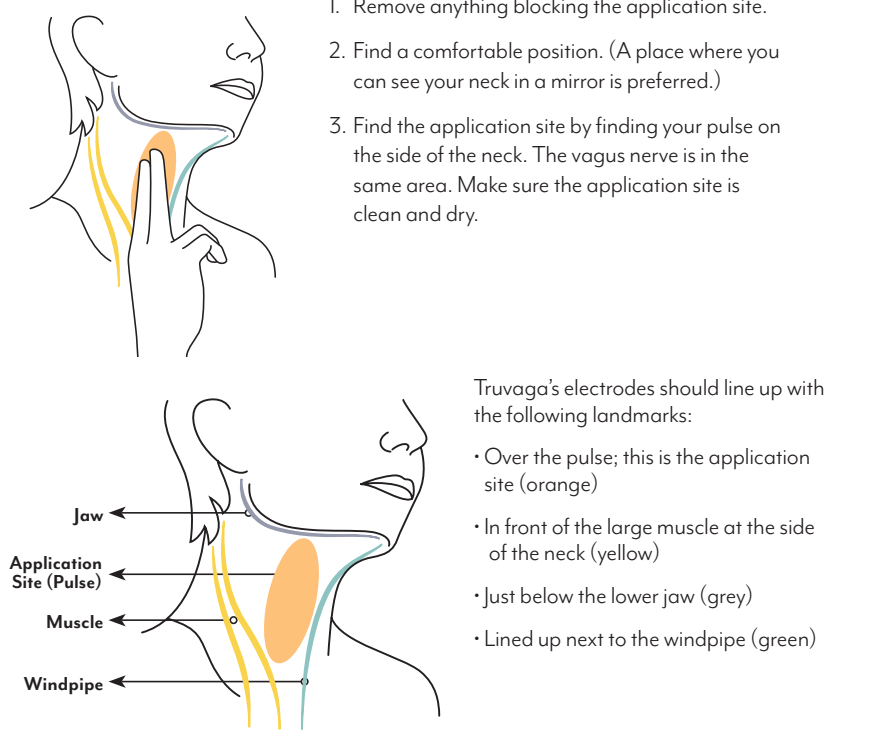


Display and Troubleshooting

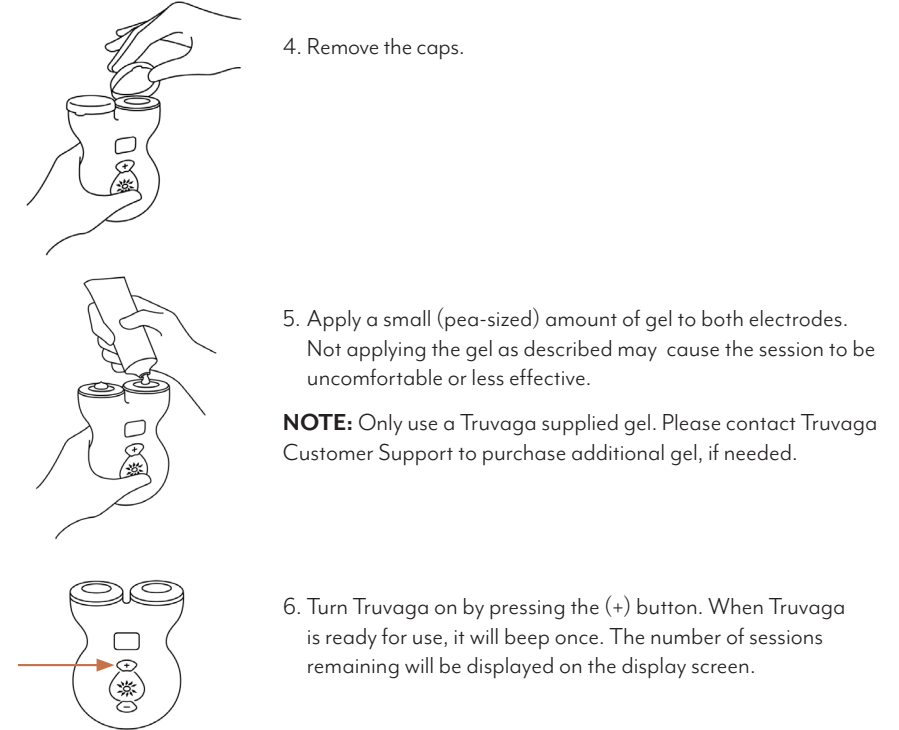
Icon Description	Icon	Example Display	Description
Sessions Remaining			9 sessions remaining
Intensity Level			Intensity level is at 20
Unlimited Days			Unlimited days. Display will always show "365" until it stops delivering sessions
Intensity Level at Last Use			Last delivered intensity level was 20

- **Truvaga does not turn on** – Restart your Truvaga by pressing and holding the (+) and (-) buttons at the same time for 10 seconds and then release. Wait 5 seconds and turn on again. If Truvaga still does not turn on, contact us.
- **Flashing green light with "Err" code** – Restart your Truvaga by pressing and holding the (+) and (-) buttons at the same time for 10 seconds and then release. Wait 5 seconds and turn on again. If Truvaga still displays "Err", contact us.
- **Flashing green light with "Lo" code** - Your battery may be low which likely means you have used up most of your 350 sessions. You can continue to use your Truvaga until all sessions are done.
- **Flashing green light with "0" code** - Congratulations, you've successfully used all 350 sessions! It's time to order your next Truvaga on truvaga.com. If you have any questions or need support, please contact us.

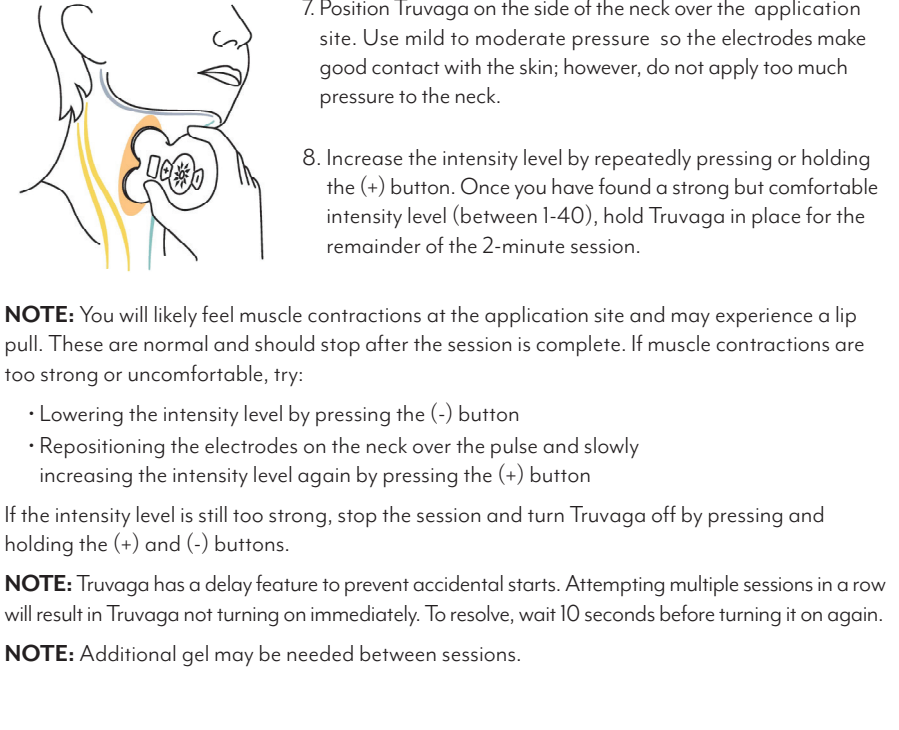
Step 1: Find your vagus nerve



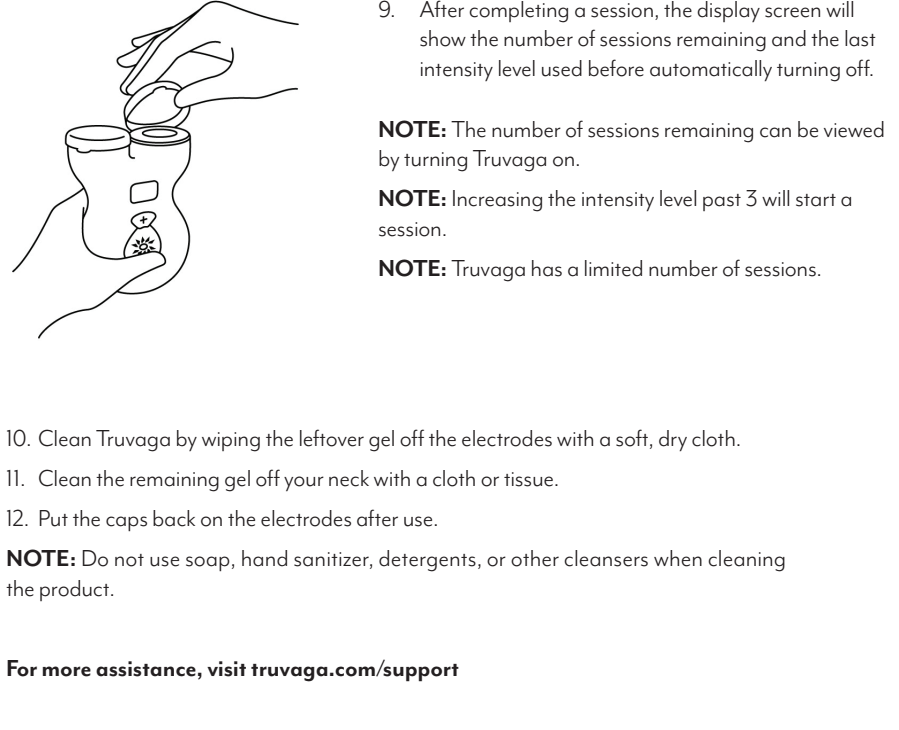
Step 2: Prepare your Truvaga



Step 3: Start your session



Step 4: Complete your session



For more assistance, visit truvaga.com/support